

time for **GRANADA!**

DISCOVER MOTRIL *The Port of the Alhambra*



time for **EXPERIENCES**

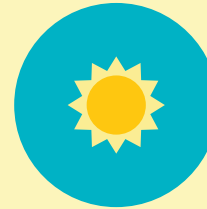
ACTIVITIES

Discover the Costa Tropical, its beaches, and gastronomy. Get lost in the city of Granada, the old capital of the Nasrid kingdom, and admire its most splendid palace, the Alhambra. Or enjoy winter sports at the Sierra Nevada ski resort. All of it less than one hour driving from Port of Motril.



MOUNTAIN

Sierra Nevada is a national park and home to the highest peaks in the Iberian peninsula and one of the best ski resorts in the whole continent. You may also enjoy high-mountain rural tourism in the Alpujarras valleys.



WEATHER

320 sunny days a year and an average annual temperature of 20° C make our climate the best tourist attraction. You will surely enjoy our fine weather during all through your stay.



SPORTS

In Granada province, you may ski in the morning and, in the afternoon, dive into the deep blue Mediterranean, where you can practice all kind of sea sports (such as paddle surf, snorkeling, scuba diving, or kayaking). In the Costa Tropical, you can also go golfing, trekking or paragliding.



CUISINE

Locally grown mangos, avocados and custard-apples mix with the Mediterranean vegetables and an impressive range of local fish and shellfish. If you order a coffee, add some locally distilled sugar cane rum.



SERVICES

In case you might need them, there are quick and efficient health services at your disposal in the area, such as the Hospital de Santa Ana in Motril or the Parque Tecnológico de la Salud in Granada city.



THE EUROPEAN TROPICS

Enjoy 73 km of paradise beaches and gaze at breathtaking seascapes from soaring cliffs. Relax or have a great time doing sea sports.

time for TRAVEL

TIMES & DISTANCES

**1 GRANADA -
THE ALHAMBRA in 35'**

You must not miss the Alhambra —the true jewel of the Nasrid architecture—, the Cathedral, and the Albaicín, a centuries-old district with sunny, quiet, tiny squares, declared a UNESCO World Heritage Site.

2 LECRÍN VALLEY in 25'

Take a walk in the countryside around the foothills of the sierras of Granada.

3 THE ALPUJARRAS in 35'

See the mountain tops from the most typically Andalusian villages.

**4 VÉLEZ DE
BENAUDALLA in 15'**

Its Nasrid garden is nicknamed “the Little Generalife”, as it was inspired by the Generalife gardens in Granada.

5 MOTRIL in 5'

The heart of the Costa Tropical.

6 SALOBREÑA in 10'

Salobreña boasts all the charm of the Andalusian fishing villages.

7 ALMUÑÉCAR in 15'

A town visited by Phoenicians, Romans and Arabs, right on the shores of the Mediterranean.

8 LA HERRADURA in 20'

The ideal destination for a beach day.

9 NERJA in 25'

Discover the oldest cave art in the world, in the Axarquía region.

10 MÁLAGA in 60'

A great tourist destination and city for a shopping and sightseeing day.



time for **DISCOVERY**

COSTA TROPICAL

The Costa Tropical, the tropical seaside of Granada, is the stretch of coastline between the Costa del Sol and the Costa de Almería, a privileged seaside historically occupied by several settlers, such as Phoenicians, Romans and Arabs. Their passage left a rich architectural heritage, such as the Arab castle of Salobreña, the impressive aqueduct of Almuñécar or the Preindustrial Museum of the Sugar Cane in Motril.

The coastline is dotted with magnificent cliffs and lonely, deserted coves, but also great tourist resorts. Our visitors may practice several sports, such as surfing, windsurfing, scuba diving, fishing, or sailing. And there is also Sierra Nevada, with its nearly 3,500 metre-high peaks, a 45-minute drive from the beaches: a paradise for skiers and mountain-lovers.



MAIN CONTACT

MR. LORENZO VERA FRANCO

Commercial Unit Manager

lvera@motrilport.com

+34 958 566 693

+34 650 938 642

MAILING ADDRESS

AUTORIDAD PORTUARIA DE MOTRIL

Recinto Portuario s/n

18613 Motril (Granada), Spain

apm@apmotril.com

www.apmotril.com

